

FLÖWON
Engineers

ISO 9001-2015 Certified

FLOW ON ENGINEERS

PRODUCT CATALOGUE

AUTOMATION VALVES

INTRODUCTION

Founded in 2009, “**FLOW-ON**” is one of the most Trusted and Emerging Manufacturer, Supplier and Exporter of the Indian valve industry. As we are having rich industrial experience, we provide high quality and highly reliable product range of valves. With the inimitable blend of experience and expertise we provide robust solutions which are flexible, highly efficient and cost effective and meet all the industrial requirements. With the mission to satisfactorily accommodate various Industry valve requirements we provide our valves with special features such as easy maintenance, Easy installation and negligible wear and tear.

We believe that “**Quality is our responsibility.**” With our rich industry experience we provide finest and best quality products in the valve industry. Whenever we talk about quality customers see quality of the final product. However our quality management system monitors every process steps and then has its quality test. As we are **ISO 9001:2015** certified so you can rely upon our products that they are inherently safe and reliable. We have created a cultural practice of quality that every employee makes it a habit to deliver best quality product.

Now “**FLOW-ON**” has become a synonym for high quality Valves which are available in both high/low pressures and work in both high/low temperatures and also suitable for highly corrosive fluids. We are Exporter & Supplier of **Gate Valves, Globe Valves, Non-Return Valves, Ball Valves, Butterfly Valves, Strainers, Forged Steel Gate- Globe- Ball- Check Valves, Pneumatic Actuated Ball Valves- Butterfly valves, Pneumatic Actuated Solenoid Valves, Electronic Motorized Control Valves, Flanges , Pipe Fittings Etc.**

Our Prominent clients



Angle type Control Valves

“FLOW-ON” offers 2/2 way Pneumatic Actuator operated Angle type Control Valve. Our control valves are made to control temperature, pressure, level or flow within a pipeline or vessel. This type of valves is most commonly used to control pressure, regulate flow and distributive control for Industrial Applications.

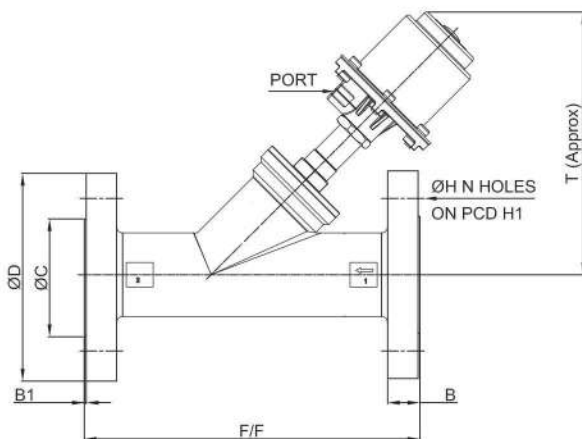


Actuator

Body	S/S 304 Pressed
Cover Flange	ASTM A351 Gr.CF8 (S/S 304) Investment Die-Cast
Spring	Spring Steel (IS 4454 Gr. III)
Port Connection	1/4" BSP (NPT on request)
Operating Pressure	3.5 to 7 Bar
Position Indicator	Nylon
Operating Cycles	350 to 650 Cycles /Hr
Media	Dry Lubricated Air/Innert Gases

Valve

Size	1/2" to 3" Screwed / Flanged
Body	ASTM A351 Gr.CF8 / CF8M /CF3M
Stem Packing	PTFE upto 180°C, Self-compensating (spring loaded)
Trim / Spindle	Stainless Steel 304/316/316L
Seat	Soft Seat (PTFE)
Gland Packing	Teflon 'V' seals, backed by graphite wiper seal (Self compensating)
Body Test Pressure	24 Bar Maximum
End Connections	Female Screwed to BSP or NPT / Flanged / Triclover
Working Fluid Press	Refer to table
Leakage	Drop tight / bubble tight, class IV ANSI B 16, 104, 1976
Operating Temp.	On steam - Continuous 155°C, Intermittent 180° C maximum (high Temp. above 180°C - On Request)



Dimensions :

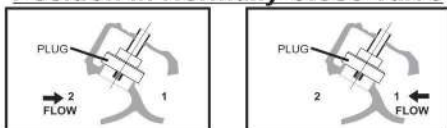
SIZE		F/F	ØC	ØD	B	B1	H	H1	N	T	PORT	Approx Weight
MM	IN.											
15	1/2"	130	38	90	9.5	1.5	16	60	4	155	1/4" BSP	2.100
20	3/4"	150	43	98.5	10.5	1.5	16	70	4	160	1/4" BSP	2.300
25	1"	160	51	108	11	1.5	16	79.5	4	170	1/4" BSP	2.500
40	1.1/2"	189	73	125	11.5	1.5	16	98.5	4	191	1/4" BSP	3.950
50	2"	230	92	152	15.5	1.5	19	120	4	218	1/4" BSP	6.600

All Dimensions are in (mm.)

Technical Specification Table

Model	Valve Size	Orifice MM	Inlet Position	Max.Op. Press Low to Close Bar	Max.Op. Press Low to Open Bar	Flow Factor M3/hr	Air Consumption Lit./Cycle
AYCV - 15	1/2"	16	N/C	16	16	4.2	0.155
AYCV - 15		16	N/O	16	16	4.2	0.155
AYCV - 20	3/4"	16	N/C	16	16	5.5	0.155
AYCV - 20		16	N/O	16	16	5.5	0.155
AYCV - 25	1"	23	N/C	16	16	13.5	0.161
AYCV - 25		23	N/O	16	16	13.5	0.161
AYCV - 40	1.1/2"	34	N/C	15	15	31.9	0.172
AYCV - 40		34	N/O	10	10	31.9	0.172
AYCV - 50	2"	45	N/C	14	16	54.5	0.184
AYCV - 50		45	N/O	16	12	54.5	0.184
AYCV - 65	2.1/2"	62	N/C	14	16	54.5	0.184
AYCV - 65		62	N/O	16	12	54.5	0.184
AYCV - 80	3"	75	N/C	10	10	105	0.735
AYCV - 80		75	N/O	10	10	1	0.735

Position in Normally Close Valve



Position in Normally Open Valve



Pilot Operated Diaphragm Type Solenoid Valve

“FLOW-ON” offers HIGH Flow diaphragm valve for Air, Water, Oil, Gas And Chemical. Our **High Pressure solenoid valve** is highly durable for an application that needs higher pressure control. Our quality brass body allows precise and fast machining, provides lower product cost as compared to another solenoid valve. Many industrial users appreciate the quality of high-pressure solenoid valve components.



Size Range : 1/2 To 4 Screwed / Flanged

Technical Specifications

Body & Cover	ASTM A351 Gr. CF8 / CF8M / CF3M
Seals / Diaphragm	Nitrile / Neoprene (optional - silicon, viton& other)
Pressure Range	0.5 to 10 bar
Temperature Range	-5° C to 85° C (On Request upto 95° C)
Coil Voltage	12V, 24V, 48V, 110V, 230V, AC/DC
Coil Insulation	'F' Class
Coil Rating	Continuous Rated

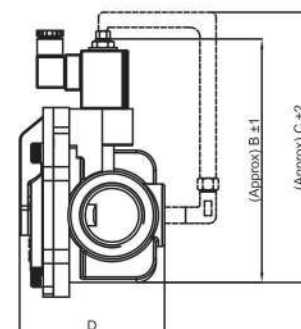
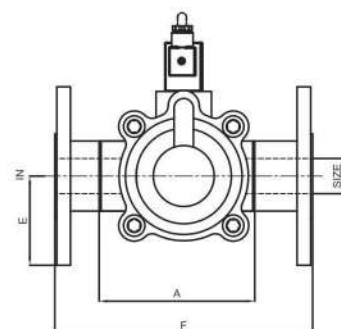


Applications :

Textile Processing Machinery, Chemical Plants, Water Treatment, Sugar Machinery, Cement Machinery, Pumps, Irrigation, Combustion Equipment, Heat Exchanger, Air Dryer, Pollution Controls, Laundry Equipments and where dependable ON/OFF type control is required.

Dimensions :

Valve Model	Size		Flow Factor Kv m ³ /hr	A Screwed	B (Approx.)	C (Approx.)	D	E	F Flanged	Weight (Approx)	
	MM	Inch								S/E	F/E
ISO -6	6	1/4	2.5	65	128	170	56	-	130	-	-
ISO -10	10	3/8	2.5	65	128	170	56	-	130	0.800	-
ISO -15	15	1/2	3.5	65	128	170	56	44.5	130	0.760	-
ISO -20	20	3/4	5.0	890	136	180	74	49.5	150	1.100	1.880
ISO -25	25	1	11.0	95	152	200	80	54	160	1.500	2.720
ISO -32	32	1 1/4	13.0	118	167	212	105	58.5	200	2.340	-
ISO -40	40	1 1/2	20.0	118	167	212	105	63.5	200	3.580	6.160
ISO -50	50	2	38.0	137	190	234	120	76.5	230	3.940	-
ISO -65	65	2 1/2	67.6	172	230	298	143	89	290	6.340	-
ISO -80	80	3	97.6	195	250	318	156	95	310	13.680	-
ISO -100	100	4	-	-	250	318	156	114	350	-	-
ISO -150	150	6	-	-	-	-	-	-	-	-	-



3 Way Control Valves

“FLOW-ON” 3-way Control valve is a lightweight valve used in low flow process as a mixing valve. It is designed as a 3-way body with two inlets for two separate flow streams in common outlet for creating third fluid. This mixing diverting control valve is made to control a variety of fluids such as water, steam, and gases. The main feature of our valve is the top guided construction which ensures smooth traveling of stable plug over entire stroke for minimizing wear and tear loss.



Actuator

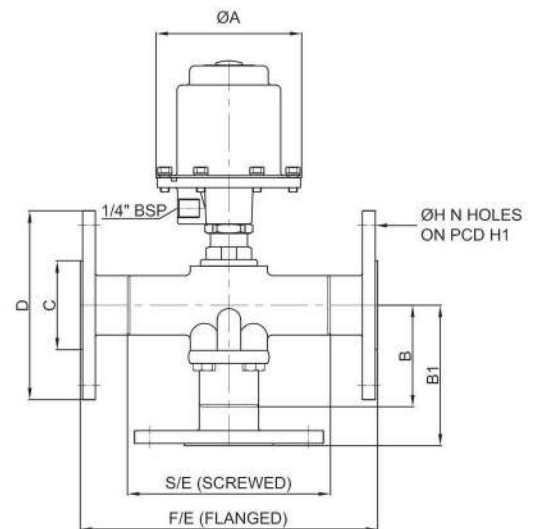
Body	S/S 304 Pressed
Cover Flange	ASTM A351 Gr.CF8 (S/S 304) Investment Die-Cast
Spring	Spring Steel (IS 4454 Gr. III)
Port Connection	1/4" BSP (NPT on request)
Operating Pressure	3.5 to 7 Bar
Position Indicator	Nylon
Operating Cycles	350 to 650 Cycles /Hr
Media	Dry Lubricated Air/Innert Gases

Valve

Size	1/2" to 2" Screwed / Flanged
Body	ASTM A351 Gr.CF8 / CF8M /CF3M
Stem Packing	PTFE upto 180°C, Self-compensating (spring loaded)
Trim / Spindle	Stainless Steel 304/316/316L
Seat	Soft Seat (PTFE)
Gland Packing	Teflon 'V' seals, backed by graphite wiper seal (Self compensating)
Body Test Pressure	42 Bar Maximum
End Connections	Female Screwed to BSP or NPT / Flanged ASA150#
Leakage	Drop tight / bubble tight, class IV ANSI B 16, 104, 1976
Operating Temp.	On steam - Continuous 155°C, Intermittent 180° C maximum (high Temp. above 180°C - On Request)

SIZE		ØA	B	B1	C	D	H	H1	N	S/E	F/E	Approx Weight	
MM	IN.											S/E	F/E
15	1/2"	102	50	83	35	89	16	60	4	85	151	1.760	3.000
20	3/4"	102	66	130.5	43	98.5	16	70	4	110	185	2.220	3.560
25	1"	102	72	106.5	51	108	16	79.5	4	120	189	3.000	4.900
40	1.1/2"	134	91	132	73	127	16	98.5	4	150	232	7.320	10.240
50	2"	134	100	146.5	92	152	19	120	4	190	283	10.440	14.560

ALL DIMENSIONS ARE IN MM



Pneumatic Actuator Operated Ball Valve



“FLOW-ON” offers Pneumatic Actuator Operated Investment Casting WCB / CF8 / CF8M Ball Valve in Two Piece / Three Piece design engineered for multiple ON/OFF operations in the down stream. Actuators are effectively used in a ball valve to control the flow of different liquid and gas from a remote location with the use of electrical or pneumatic power. With the help of this feature, we can reduce the need for the operator to open or close the flow of liquid manually and increase safety concerns with productivity.

Size Range : 1/2" to 14" Screwed / Flanged / Triclover / Socket weld

Actuator

Type	Rack and Pinion Type
Actuation	Double Acting / Single Acting (Spring Return)
Mounting Std.	ISO 5211 An International Standard
Pneumatic Connections	NAMUR Standard



Valve

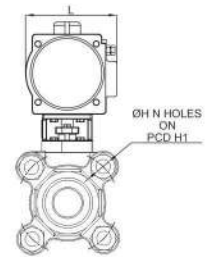
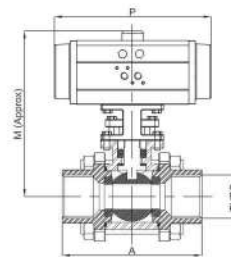
Body	ASTM A216 Gr. WCB / ASTM A351 Gr. CF8 / CF8M
Ball	ASTM A351 Gr. CF8 / CF8M
Stem	Stainless Steel AISI 304 / AISI 316 / AISI 410
Gland	Stainless Steel AISI 304 / AISI 316 / M.S.
Seat Packing	PTFE (Gland Filled, Carbon Filled, Teflon - Optional in case of high Temperature)
End Connection	Screwed to - BSP / NPT / Socket Weld Ends to ANSI JB 16.11 Flanged to - ANSI B 16.5 Class 150/300 Table - D,E,F, (On Request) Triclover Ends - (On Request) Socket Weld - (On Request)



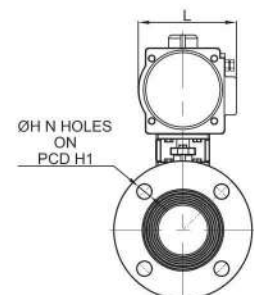
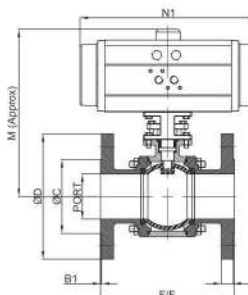
Item	Type of Test	Testing Pressure	Working Pressure	Operating Temperature (high Temp. On Request)
Actuator	Pneumatic Bubble Test	180 PSIG	45 to 150 PSIG	-20°C to 80°C
Valve Body Screwed End	Hydraulic	450 PSIG	315 PSIG	Max. 180°C
Valve Body Flanged 150#	Hydraulic	450 PSIG	315 PSIG	Max. 180°C
Valve Body Flanged 300#	Hydraulic	112 PSIG	815 PSIG	Max. 180°C

DIMENSIONS :

SIZE		A	THDS. BSP	ØH	H1	N	L	P	M	Approx Weight
MM	IN.									
15	1/2"	68	1/2"	8	42.5	4	65	140	160	1.160
20	3/4"	72	3/4"	8.5	53	4	65	140	160	1.620
25	1"	84	1"	9	59	4	73	170	180	1.920
40	1.1/2"	119	1.1/2"	11	87.5	4	73	170	190	4.070
50	2"	130	2"	10	103	4	85	216	216	4.970



SIZE		B	B1	C	D	PORT	H	H1	N	F/F	L	M	N1	Approx Weight
MM	IN.													
15	1/2"	10.5	1.5	35	89	12.5	15.5	60	4	108	65	160	140	2.250
20	3/4"	10.5	1.5	43	98.5	18	16	70	4	117	65	160	140	2.900
25	1"	12	1.5	51	108	25	16	79.5	4	127	73	180	170	4.050
40	1.1/2"	14	1.5	73	127	37	16	98.5	4	165	73	190	170	5.900
50	2"	16	1.5	92	152	50	19	120	4	178	85	210	216	9.200
65	2.1/2"	17.5	1.5	105	178	64	19	140	4	190.5	94	242	232	13.850
80	3"	21	1.5	127	190.5	75	19	152	4	203	105.5	260	271	21.450
100	4"	23.5	1.5	157	228.5	98	19	190	8	228	122	310	293	27.900



All Dimensions are in (mm.)

Pneumatic Actuator Operated Butterfly Valve



“FLOW-ON” offers rubber lined Butterfly Valves for HVAC and Utilities. This Valves are truly “FIT AND FORGET VALVES” which requires minimum maintenance. The Body lines which also function as soft seat, comes in an integrally moulded version & offers Bi-Directional Sealing against vacuum upto pressure of PN 10 / PN 16.

Size Range : 1/2" to 40"

Actuator

Type	Rack and Pinion Type
Actuation	Double Acting / Single Acting (Spring Return)
Mounting Std.	ISO 5211 An International Standard
Pneumatic Connections	NAMUR Standard

Valve

Body	I.C. / CI (IS 210 Gr. FG 200 / 220) WCB / S.S. 304 / S.S. 316
Disc	CF8 / CF8M / CF3M / S.G. Iron / Teflon Coated / Powder Coated" Nylon Coated / Rubber Line
Seat	EPDM / Nitrile / Hayplon / Viton / Moulded or Replaceable muffler type
Shaft	AISI 410 / CF8 / CF8M / CF3M
Valve Type	Centric Disc Butterfly Valve with a single piece rubber lined body
Body Type	Short wafer (sandwiched between flanges)
Seat Type	Integrally moulded with the body
End Connection	Wafer Sandwiched (Lug Type On Request)
Pressure rating	PN 10 /PN 16 (On Request)
Oper. Temp. range	-25 °C to 130 °C (depending on MOC)
Seat Leakage	Tight shut off
Operation	Hand lever for sizes from 40 mm to 350 mm Worm gear boxes for 40 mm to 1 000 mm

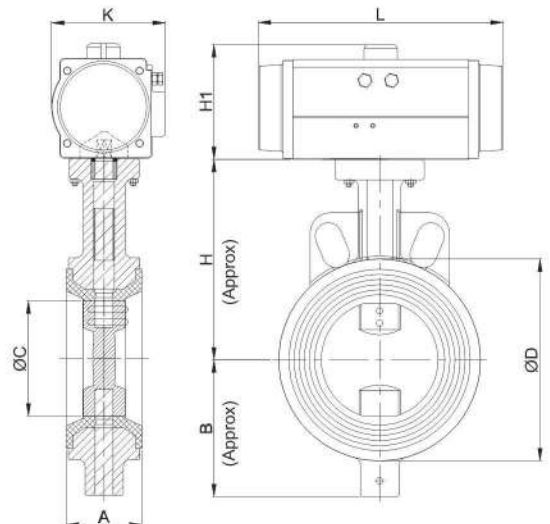


Item	Type of Test	Testing Pressure	Operating Temperature (Normal)	Operating Temperature (High)
Actuator	Pneumatic Bubble Test	180 to 150 PSIG	-20°C to 80°C	High Temp. On request
Valve Body	Hydraulic	225 PSIG	Max. 80°C	High Temp. On request
Seat	Hydraulic	150 PSIG	Max. 80°C	High Temp. On request

DIMENSIONS :

SIZE		A	B	ØC	ØD	H	L	H1	K	Approx Weight
MM	IN.									
40	1.1/2"	33	60	38	80	105	136.3	92	62	2.200
50	2"	43	60	48	90	115	168	101.5	72.5	3.000
65	2.1/2"	46	65	63	105	120	168	101.5	72.5	3.600
80	3"	46	75	76	122	130	168	101.5	72.5	4.200
100	4"	52	92	100	147	150	217	114	84.5	6.100
125	5"	56	105	125	175	155	232.5	127	93.5	8.200
150	6"	56	120	150	200	175	271	135	105	10.850
200	8"	60	150	201	255	205	293	152	122	16.600
250	10"	68	190	240	320	255	405	181	149	32.450
300	12"	78	225	290	375	285	487	322	226	35.450

All Dimensions are in (mm.)



Pneumatic Actuator Operated High Performance Replaceable Seat Spherical Disc Butterfly Valve



“FLOW-ON” offers Spherical Disc Valve with compact and Easy replaceable Seal Design for 10 kg/cm² / 20 kg/cm² & to withstand 180°C to 600°C temperature. This Valves are truly “FIT AND FORGET VALVES” which requires minimum maintenance. Due to our expertise and proficiency in this field, we supply our pneumatic offset butterfly valve within the given time frame and specification. Our all range of valves are available at market leading price keeping in mind needs and uses of the customer.

APPLICATION

- Hygienic Powder & Slurries, especially in Pharmaceutical Industries.
- Chemicals and Dyeing Fluids in Textile Processing
- Brine Waters & Oils.
- Steam Lines, Air/Gas Lines.



Actuator

Type	Rack and Pinion Type
Actuation	Double Acting / Single Acting (Spring Return)
Mounting Std.	ISO 5211 An International Standard
Pneumatic Connections	NAMUR Standard

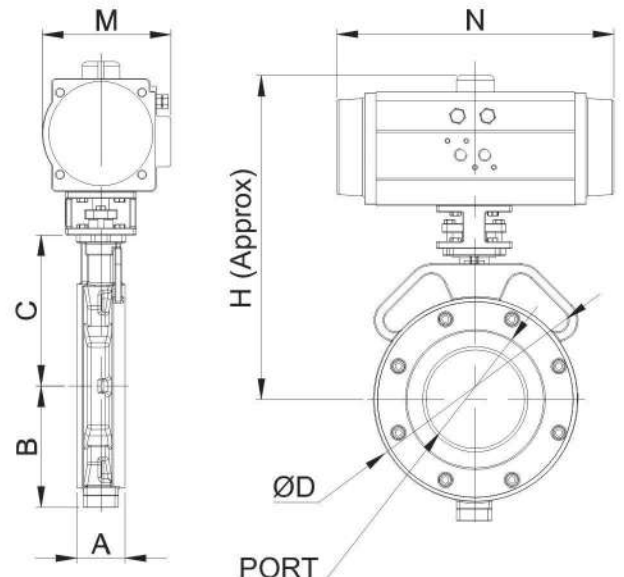
Valve

Body	WCB/CF8/CF8m/Cast Iron
Disc	WCB/CF8/CF8m/Cast Iron
Seat	PTFE (available EPDM / Viton / Metal to Metal)
Plate Mounting	NAMUR Standard
Operation	Hand Lever Type, Worm Gear Box Type, Pneumatic Actuated, Electrical Actuated

DIMENSIONS :

SIZE		A	B	C	H	PORT	ØD	N	M	Approx Weight
MM	IN.									
40	1.1/2"	42	58	86	220	38	82	169	73	3.100
50	2"	45	68	88	222	51	96	169	73	3.400
65	2.1/2"	48	70	100	234	60	112	169	73	4.100
80	3"	48	79	109	255	72	131	216	84	5.700
100	4"	54	95	131	277	100	160	216	84	7.300
125	5"	57	118	155	315	123	188	232	93	10.050
150	6"	57	132	170	342	144	219	272	105.5	13.200
200	8"	64	161	201	390	192	271	293	122	19.850

All Dimensions are in (mm.)



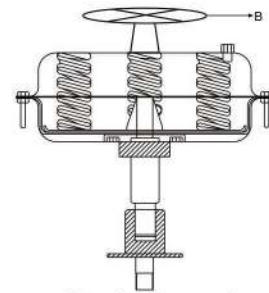
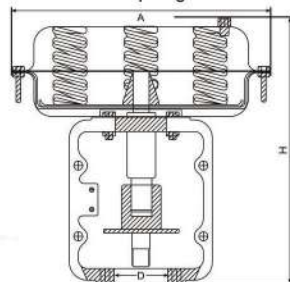
“FLOW-ON” offers threaded seat 3-way Pneumatic Diaphragm control valve is designed for general service applications up to the limits of the ANSI 150 / 300 pressure class rating. These general service applications include both the mixing and diverting of process fluids found in most process control industries. Our 3-way Pneumatic Diaphragm control valve has several standard options such as temperature extensions, metal bellows seals, and heating jacket. In addition to these options the valves can be specialized to meet the exact process needs such as NACE version for sour gas service and cleaned for specific service (e.g. Oxygen, Chlorine, High Purity, etc.).



Technical specification :

Actuator	Diaphragm & Multy Spring type. Air to open / Air to close as a standard. (Piston actuators / Electrical actuators on request)
Bonnet	Standard for ('CLD' Temperature up to 220°C) Extended with FINS for ('CHD' Temperature up to 450°C)
Internals	S.S. 304 [316 (Hard facing when required) Other materials on request]
Gland Packings	Teflon / Grafoil
Trim Desing	Contoured parabolic / Pressure balanced
Sizes	1/2" to 12"
Characteristic	Linear / Equal percentage / ON - OFF (Quick opening)
End Connection	Flanged end to end ANSI B16.5 CL 150 [300# / 600# available on request]
Pressure Ratings	ANSI B16.5 CL150/300/600
Leakage	ANSI B16.104 CL IV for metal to metal seating. (Class V & Class VI leak tightness with soft seating on request)

Pneumatic Diaphragm Actuator



Manual and pneumatic clutch type actuator

Type	Diaphragm area	Spring	Max stroke	Air pressure (Kg.)
DA - CHD-1	Direct	4~8	15~20	1.5
	Reverse			0
DA - CHD-2	Direct	4~8	25~30	1.5
	Reverse			0
DA - CHD-3	Direct	3~6	34~45	1.5
	Reverse			0
DA - CHD-4	Direct	4~8	55~70	1.5
	Reverse			0
DA - CHD-5	Direct	4~8	90~110	1.5
	Reverse			0

Technical Sheet Parameter Actuator

Type	Size (mm)				Valve Size
	D	H	A	B	
DA-CLD - 01	60	305	288	-	DL15-DL25
DA-CLD - 02	60	325	288	-	DL32-DL50
DA-CLD - 03	80	440	360	-	DL65-DL100
DA-CLD - 04	95	545	470	-	DL125-DL200
DA-CLD - 05	100	745	560	-	DL250-DL300
Mo-DA-CLD - 02	60	-	288	250	DL15-DL25
Mo-DA-CLD - 03	80	-	288	250	DL32-DL50
Mo-DA-CLD - 04	95	-	360	350	DL65-DL100



Specifications

Size	50NB – 600NB
Pressure	150PSI.
Temperature	0 Deg C - 1200 Deg C.
Body , Chest	Solid One piece casting of Cast Iron Fg 260 Cast Steel Gr WCB ,CF8,CF8M.
Seat	Integral to Body, Soft, Optional.
Gate	AISI SS 304,316,316L,317,317L .
Screw Spindle	AISI SS 410,304,316.
Nut	Brass.
Yoke	Plate type of MS .
Gland Follower	Cast Iron , Cast steel , Ductile Iron ,CF8,CF8M.
Hand Wheel	Cast Iron , Cast steel , Ductile Iron
Gland Packing	PTFE , PTFE Impregnated .
Ends	Lugged.
Port	STANDARD [Round] Optional V Port, Diamond Port,.

MATERIAL OF CONSTRUCTION [OPTIONAL]

BODY	GATE	SPINDLE	GLAND
1. CF8	AISI SS304	AISI SS304	CF8
2. CF8M	AISI SS316	AISI SS316	CF8M
3. HAST 'C'	HAST 'C'	AISI SS316	CF8M

Material Specification and Grades

Cast Iron	IS 210 Gr Fg260
Cast Carbon Steel	ASTM A216
Stainless Steel	ASTM A351 Gr CF8, ASTM A351 Gr CF8M
HAST C	Hast Alloy Gr C.

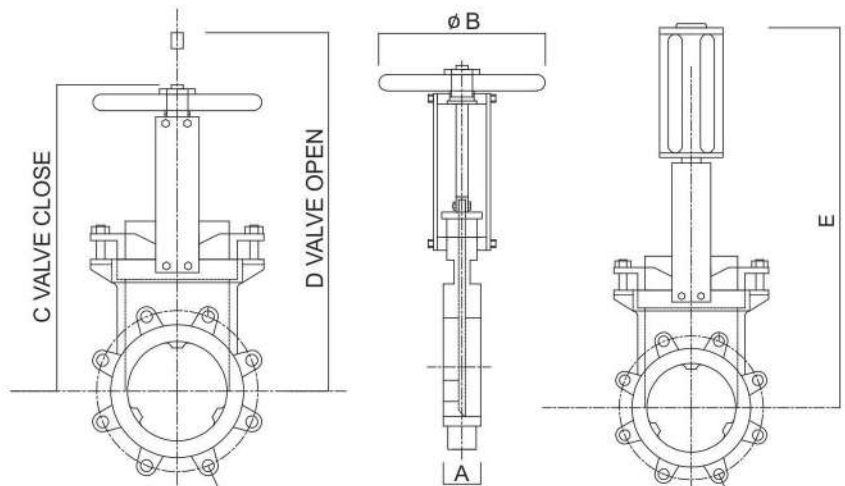
TEST SPECIFICATION

Body Shell Test As per MSS SP – 81 Norms $10\text{Kg}/\text{Cm}^2$
Working pressure $6\text{Kg}/\text{Cm}^2$

Seat Leakage Test Metal Seated Valves as per MSS SP 81 Norms & Tappi 405.
Soft Seated Valves Zero Leakage

DIMENSIONS IN (MM)

600 NB	114	508	1340	1960	3100
500 NB	114	508	1145	1645	2580
450 NB	114	508	1095	1545	2100
400 NB	89	508	1030	1380	1960
350 NB	76	508	885	1235	1780
300 NB	76	406	770	1070	1600
250 NB	70	406	710	960	1300
200 NB	70	305	665	915	1250
150 NB	57	254	580	730	1075
125 NB	57	254	505	630	925
100 NB	51	203	330	430	730
80 NB	51	203	290	370	615
65 NB	51	203	263	228	513
50 NB	48	203	220	275	425
SIZE	A	ØB	C	D	D



Dimensions given above are indicative, please request for certified drawings for piping layout.

Knife Gate Valve



Ball Valve



Electrical Actuator Operated Valves

Control Valve



Offset Disc Valve



Butterfly Valve



Suppliers of various types Electrical Actuators / Electric Actuators, Linear Actuators, Compact Actuators, Pneumatic Actuators with Motorized Valves / Motorized Dampers.

FLÖWON

Engineers

ISO 9001-2015 Certified



Registered Office:
1 , Madni Park , B.R.Somani Compound
Nr. Govt Ware House, Danilimda,
Ahmedabad,Gujarat -380028
Mobile: +91 7984077365
Whatsapp:+91 8735989424
Skype:flowon_engineers

Branch Office:
208 Business point, Narol Circle,
Narolgam,
Ahmedabad, Gujarat 380028